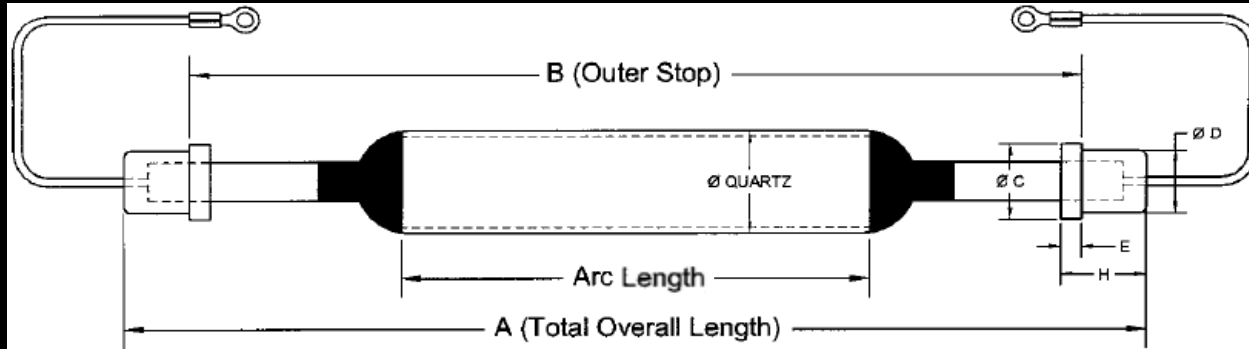


Lamp Specification Sheet



Dimensions

Referring to the figure above...

Arc Length (in mm.)	
A (Total Overall Length)(in mm.)	
B (Outer Stop) (in mm.)	
Ø Quartz (in mm.)	
Ø C (in mm.)	
Ø D (in mm.)	
E (in mm.)	
H (in mm.)	

Wire Lead Termination Type

Please select "X" for the appropriate Lead Termination Type

No Lead Termination					
Terminal		Quick Disconnect			
Ring	Fork	Male	Female	Pin	Ferrule

Terminal Size

Please select "X" for the appropriate Terminal Size Type

#8	
#10	
#14	

Physical Characteristics

Part #	
Manufacturer Part #	
Lamp Type	

Electrical Characteristics

Lamp Voltage (in Volts)	
Lamp Current (in Amperes)	
Power Ratings (in Watts per Inch)	
Open Circuit Voltage (in Volts)	

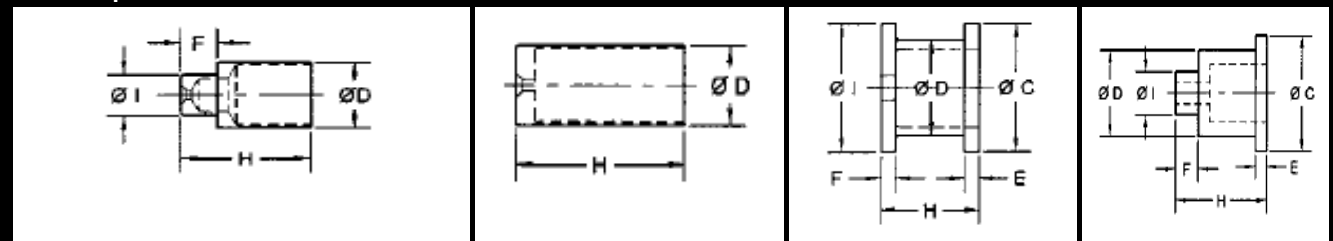
End Cap Termination Type

Please select "X" for the appropriate End Cap Termination Type

		X		

Wire Lead Length Left (in mm.)	
Wire Lead Length Right (in mm.)	
End Cap Material	

End Cap Dimensions



Referring to the figures above... Drawing End Cap

Ø C (in mm.)	
Ø D (in mm.)	
Ø I (in mm.)	
E (in mm.)	
F (in mm.)	
H (in mm.)	
J (in mm.)	